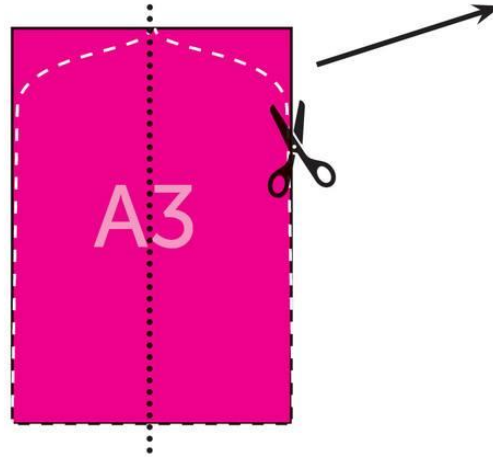


How to...make a large, mesh, 5 petal flower.

YOU WILL NEED

7 x A3 sheets of synthetic mesh fabric
 1 x 8cm section of a cardboard roll (alfoil/gladwrap roll)
 plastic dessert plate (flat)
 scissors
 stapler
 hot glue gun and glue sticks
 brightly coloured spray paint
 2 lengths of wire approx 40cm ea.

..... FOLD LINE
 --- CUT LINE



1. CUT this piece of paper along the black line. This will give you the petal shape to trace onto the mesh fabric

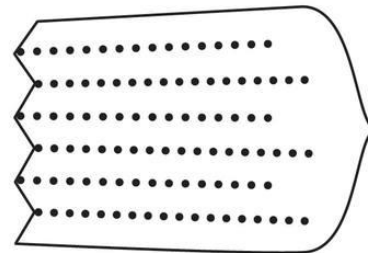
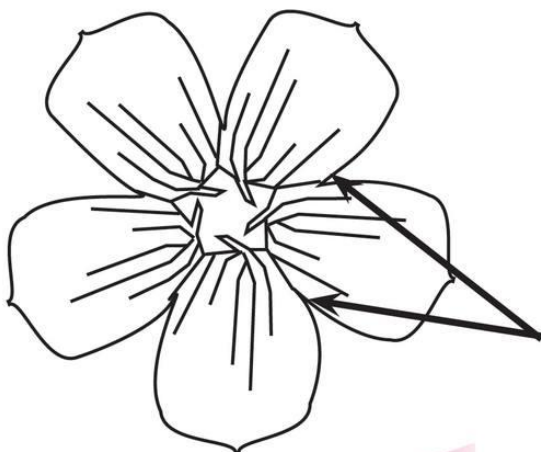
2. Petals:

Trace this shape onto each of the 5 x A3 pieces of mesh fabric, then CUT along the line.

(using this shape)

* folding in half and then cutting may help

3. FOLD each petal (concertina style) with approx 2cm wide folds, then staple the bottom end together



4. Lay the petals out in a circle and STAPLE the petal sides together in the middle.



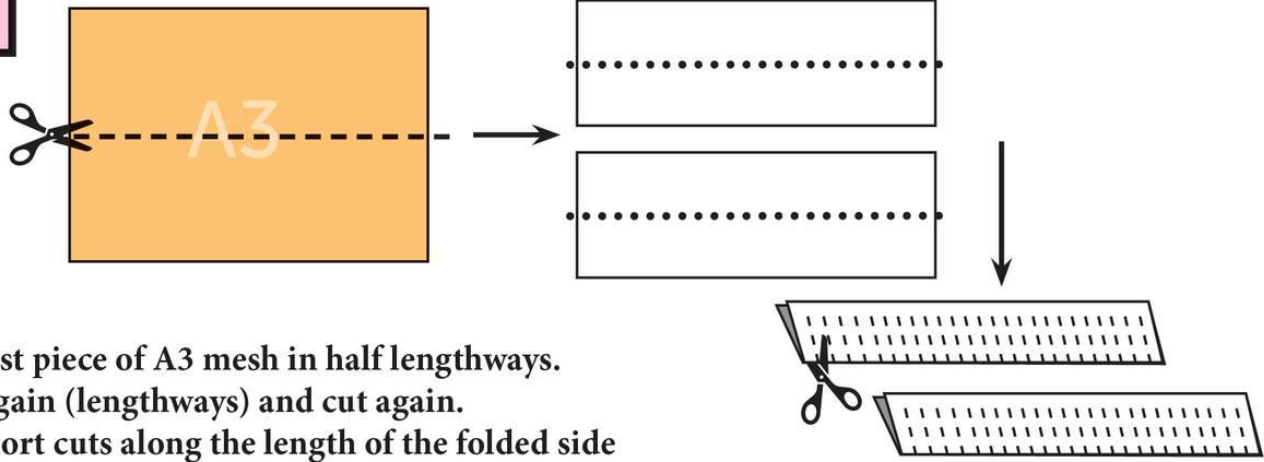
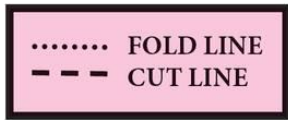
5. Spray paint the petals and set aside to dry



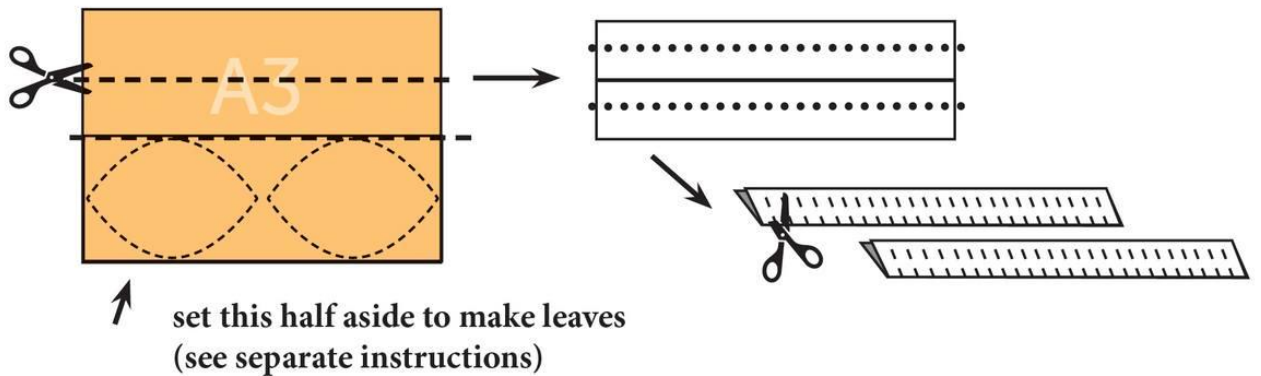
How to... make a large mesh 5 petal flower cont.



6. Centre of flower: cut one of the two remaining pieces of A3 mesh in half lengthways. Fold in half again (lengthways) and make short cuts along the length of the folded side as indicated. Do not cut all the way through.



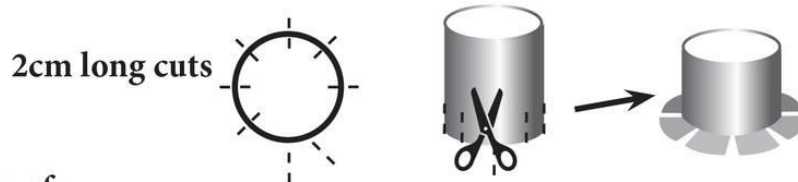
7. Cut the last piece of A3 mesh in half lengthways. Fold in half again (lengthways) and cut again. Then make short cuts along the length of the folded side as indicated. Do not cut all the way through.



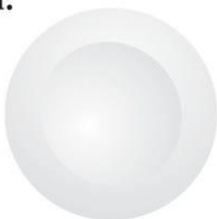
1 x 8cm long,
approx. 5cm
diameter
cardboard tube



8. Take the cardboard roll and make 2cm long cuts around one end of the cardboard tube and splay out the base.

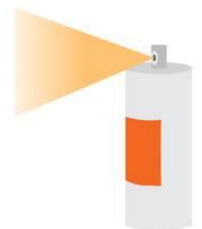
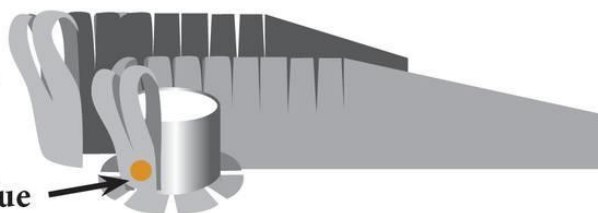


9. Wrap the smaller sections of mesh around the roll and secure with hot glue, one after the other, then follow with the wider sections of the mesh.



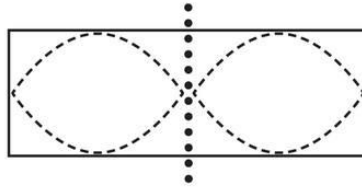
hot glue

10. Spray paint the flower centre and allow it to dry before slotting it into the centre of the petals. Glue a plastic plate to the back of the flower to secure the centre in place.



How to... simple leaves.

1. Cut leaf shape from this piece of paper. Trace the leaf shape onto the mesh.

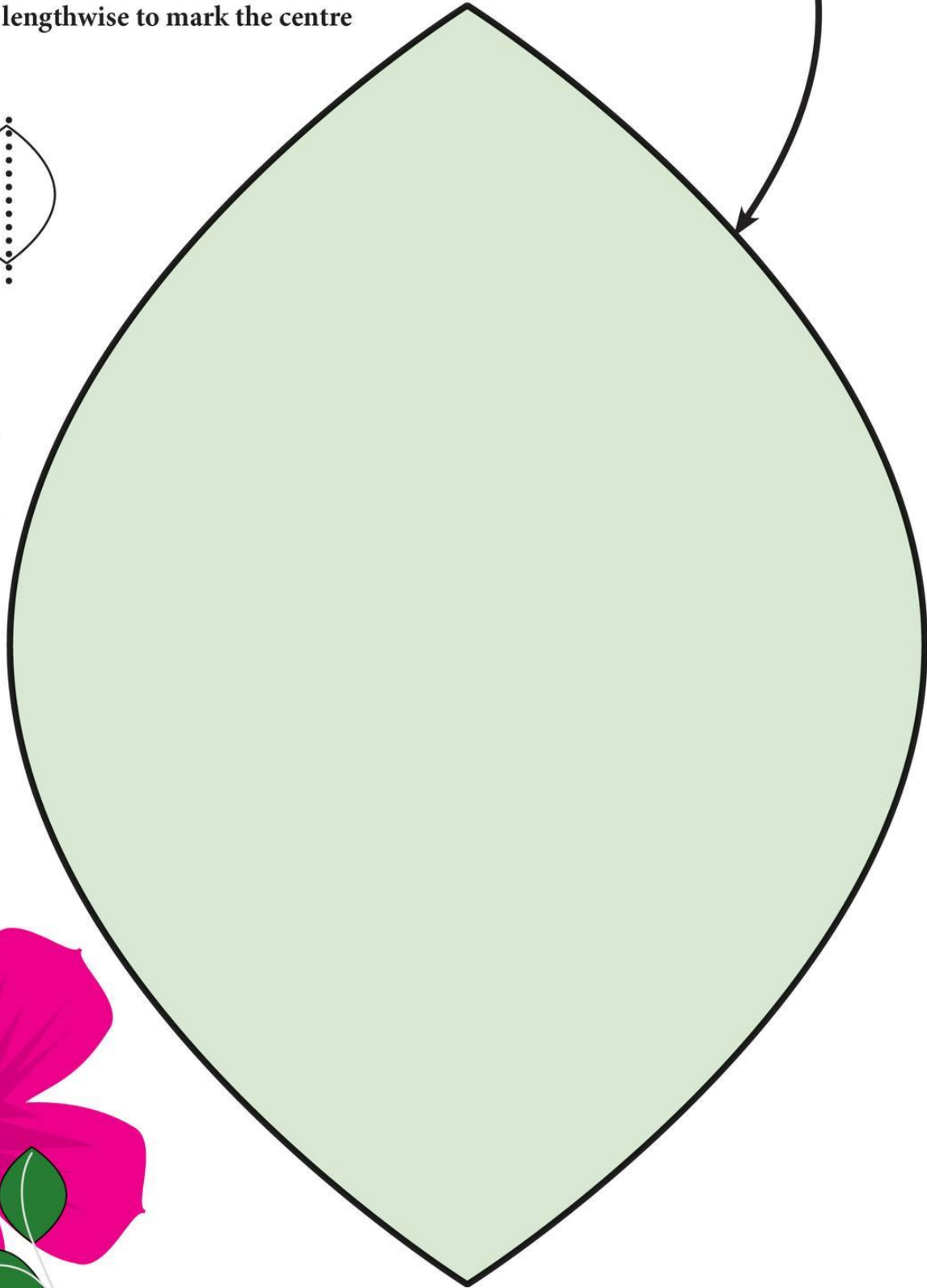
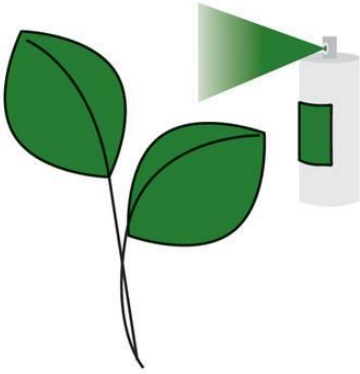


2. Fold the leaf shapes lengthwise to mark the centre of the leaves.

3. Apply hot glue along the fold line to attach the wire stem to the leaf.



4. Spray paint either side of the leaves.



How to... make a large multi-petal flower.



YOU WILL NEED

20 x A4 sheets of synthetic mesh fabric
scissors
hot glue gun and glue sticks
brightly coloured spray paint
4 lengths of wire approx 40cm ea.
cardboard roll (eg Gladwrap end roll)
OPTION A:
1 x 15cm section of a cardboard roll
poly pipe for a stem
OPTION B:
1 x 8cm section of a cardboard roll
+ 1 x plastic plate

..... FOLD LINE
- - - CUT LINE

10 x A4

10 x A5

8 x A6

1 x A4 for flower centre
+ cardboard roll

2 x A4
for leaves

1 x A4

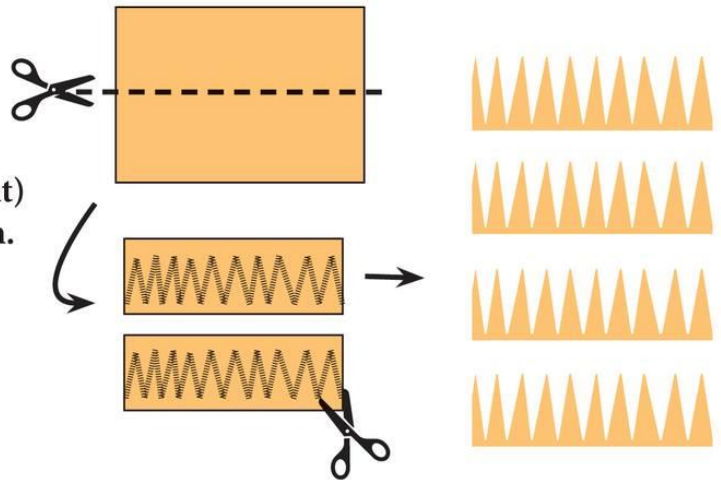
wire x 4 for leaf stems

OPTION A: poly pipe
for flower stem

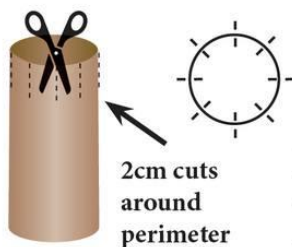
OPTION B:
plastic dessert plate
(for a flat based flower)

1. FLOWER CENTRE

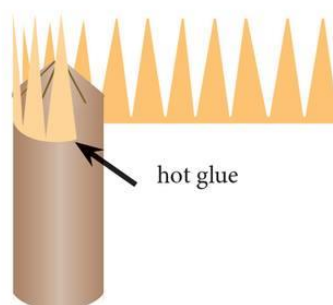
Take 1 sheet of A4 and cut in half (see right) then cut into jagged edged pieces as shown.



1 x 4cm
diameter
cardboard tube
Option A - 15cm
length
Option B
8cm length



2. Take the cardboard roll and make 2cm long cuts around one end of the cardboard tube. Press the end tabs together and glue to seal the end.



3. Wrap the jagged sections of mesh around the roll and secure with hotglue, one after the other. Pinch some of the inner jagged sections together to cover the middle securing with the hot glue.

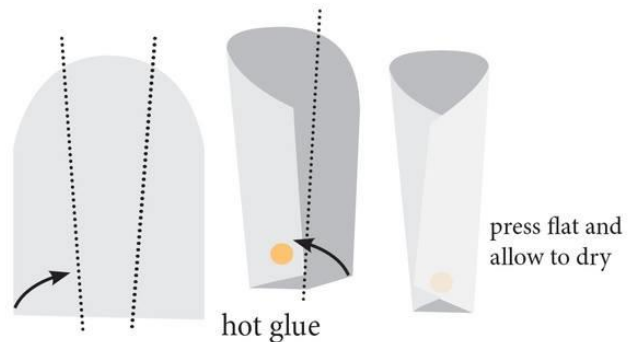
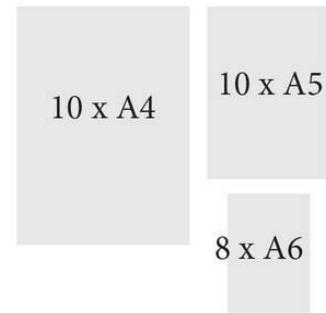
4. Spray paint the flower centre. Once dry, set aside and work on the PETALS.



How to...make a large multi-petal flower cont..

5. PETALS

Fold the A4, A5 and A6 mesh sheets in half and cut a curve, starting approx 1/3 of the length of the long side to the middle of the top as illustrated (below)



6. Open out the sheets then re-fold into thirds and secure at the middle of the bottom side with hot glue.

7. Decide which OPTION (A or B below) to follow for the attachment of the petals.

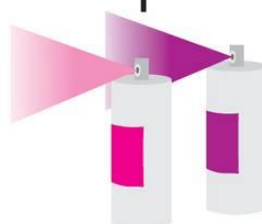
7a. OPTION A.

(flower can accommodate a stem)

Attach the petals to the centre roll starting with the small petals then the middle sized, finishing with the large petals., using globs of hot glue at the base of the petals. When you have finished Cover the centre piece with a plastic bag when you are ready to spray paint the petals.

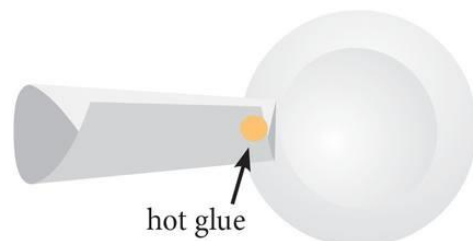


8a. Cover the centre with a plastic bag while you spray paint the petals. Use two paint colours for the petals to give the flower more depth. Remove the plastic bag when dry and secure using black gaffa tape, to a piece of poly irrigation pipe as a stem.



7b. OPTION B. (flat based flower)

Attach the petals to a plastic plate starting with the large petals, around the perimeter of the plate, and working inwards to the centre. Attach the centre piece to the centre of the plate last - ideally after you have spray painted the glued petals in a colour which contrasts the centre.



8b. Spray paint the petals. Use two paint colours for the petals to give the flower more depth. Allow to dry then glue the flower centre to the middle of the plate.