

# How to... make a large multi-petal flower.

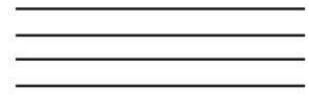
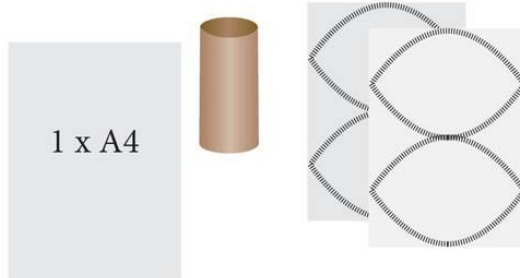


**YOU WILL NEED**  
 20 x A4 sheets of synthetic mesh fabric  
 scissors  
 hot glue gun and glue sticks  
 brightly coloured spray paint  
 4 lengths of wire approx 40cm ea.  
 cardboard roll (eg Gladwrap end roll)  
**OPTION A:**  
 1 x 15cm section of a cardboard roll  
 poly pipe for a stem  
**OPTION B:**  
 1 x 8cm section of a cardboard roll  
 + 1 x plastic plate

..... FOLD LINE  
 - - - CUT LINE



1 x A4 for flower centre + cardboard roll      2 x A4 for leaves



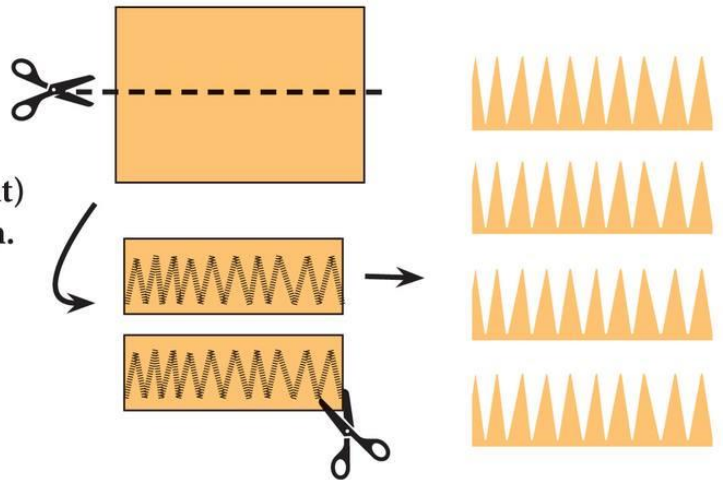
wire x 4 for leaf stems

OPTION A: poly pipe for flower stem

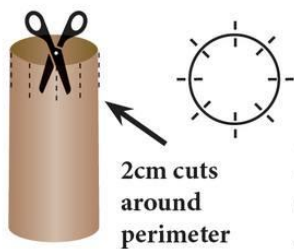
OPTION B: plastic dessert plate (for a flat based flower)

## 1. FLOWER CENTRE

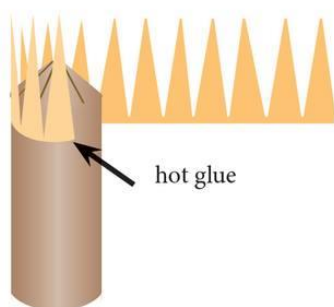
Take 1 sheet of A4 and cut in half (see right) then cut into jagged edged pieces as shown.



1 x 4cm diameter cardboard tube  
 Option A - 15cm length  
 Option B 8cm length



2. Take the cardboard roll and make 2cm long cuts around one end of the cardboard tube. Press the end tabs together and glue to seal the end.



3. Wrap the jagged sections of mesh around the roll and secure with hotglue, one after the other. Pinch some of the inner jagged sections together to cover the middle securing with the hot glue.

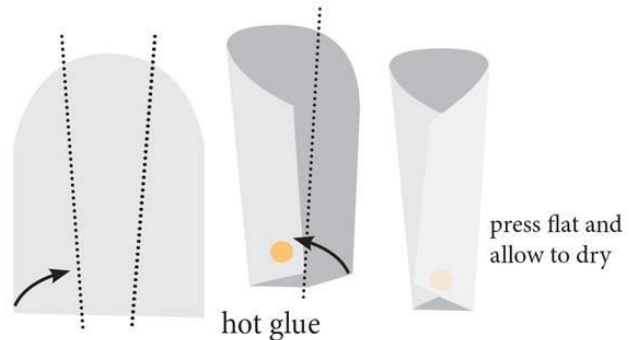
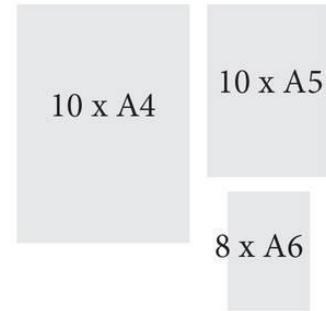
4. Spray paint the flower centre. Once dry, set aside and work on the PETALS.



# How to... make a large multi-petal flower cont..

## 5. PETALS

Fold the A4, A5 and A6 mesh sheets in half and cut a curve, starting approx 1/3 of the length of the long side to the middle of the top as illustrated (below)



**6.** Open out the sheets then re-fold into thirds and secure at the middle of the bottom side with hot glue.

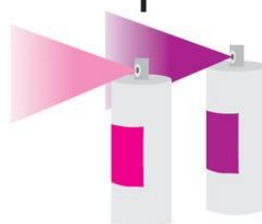
**7.** Decide which OPTION (A or B below) to follow for the attachment of the petals.

### 7a. OPTION A.

(flower can accommodate a stem)  
Attach the petals to the centre roll starting with the small petals then the middle sized, finishing with the large petals., using globs of hot glue at the base of the petals. When you have finished Cover the centre piece with a plastic bag when you are ready to spray paint the petals.

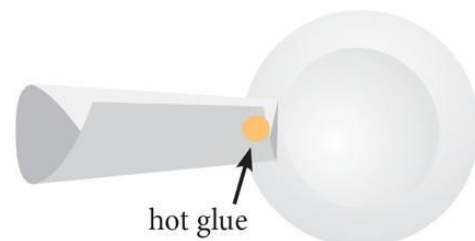


**8a.** Cover the centre with a plastic bag while you spray paint the petals. Use two paint colours for the petals to give the flower more depth. Remove the plastic bag when dry and secure using black gaffa tape, to a piece of poly irrigation pipe as a stem.



### 7b. OPTION B. (flat based flower)

Attach the petals to a plastic plate starting with the large petals, around the perimeter of the plate, and working inwards to the centre. Attach the centre piece to the centre of the plate last - ideally after you have spray painted the glued petals in a colour which contrasts the centre.



**8b.** Spray paint the petals. Use two paint colours for the petals to give the flower more depth. Allow to dry then glue the flower centre to the middle of the plate.