

GRAND CENTRAL FLORAL PARADE

TIPS & TRICKS

Front Banner

DON'T

- use loose canvas signs or vertical side poles (unless the sign is framed) - otherwise the sign will flop in the middle & your message will be illegible.

DO...

- use dowels as horizontal handles & weights.
- use corflute or sturdy canvas material.
- consider unusual shapes for your signage.
- put your sign on a frame.
- add chunky wheels to the frame.
- if you have music you could conceal a speaker behind the sign.
- decorate your frame with flowers.
- include smiling florally themed ambassadors to carry your signage!
- signage with walkers = 3m max. width.



GRAND CENTRAL FLORAL PARADE

TIPS & TRICKS

Big Ticket Items

DON'T

- sweat the details - you'll be seen from a distance.

DO...

- think BIG & BRIGHT!
- SCALE it UP!
A big ticket item eg a character or logo instantly identifies your brand & can be reused /redecorated from year to year. It's worth investing in something spectacular!
- utilise the height you have available (keep in mind that your float must fit between the trees outside City Hall on Ruthven Street).





GRAND CENTRAL FLORAL PARADE

TIPS & TRICKS

Parade Momentum

DON'T

- let the GAP BETWEEN YOUR ENTRY & the previous entry exceed 20 METRES!
- include any BACKWARD manoeuvres.
- DEFINITELY DO NOT STOP!

DO...

- maintain a consistent GAP BETWEEN YOUR ENTRY and the previous entry. It should be no more than 20 METRES!
- KEEP MOVING (even if there is an unexpected delay - keep the energy level high). We don't want the audience to think the parade has ended mid way through, so keep up the pace!



GRAND CENTRAL FLORAL PARADE

TIPS & TRICKS

Decorating Vehicles

DON'T

- neglect to decorate your tow vehicle as first impressions count!
- don't use a tow vehicle that is larger than the float you are towing or your float will be overshadowed/lost.

DO...

- florally dress your happy (smiling & waving) driver and passengers - EVERYONE IN PARADE MUST BE IN COSTUME!
- choose a brightly coloured vehicle that complements your colour scheme.
- decorate your whole vehicle - or as many parts of it as possible (wheels, window frames, bonnet, roof bumper, tow area etc.).
- consider a mesh frame overlay in an unusual shape.
- include real floral arrangements on the bonnet/roof.
- consider a vehicle wrap.
- consider the safety of your driver and passengers.
- fuel up before parade :)



GRAND CENTRAL FLORAL PARADE

TIPS & TRICKS

50-70% Floral Content

DON'T

- get caught up in small details & remember - this is a **FLORAL FESTIVAL!!!**

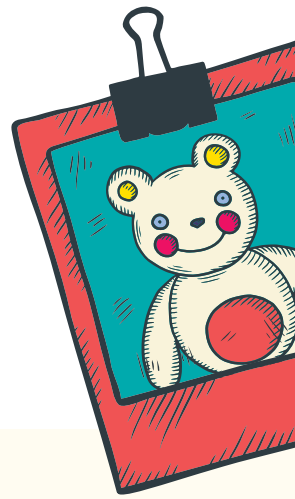
DO...

- think **BIG, BRIGHT** and **COLOURFUL**.
- grow your own potted colour or order potted colour from a local supplier (eg Pohlmanns). Get your order in early!
- dress every member in your group in as many flowers as you can - including floral hats/headbands.
- choose coloured flowers to complement your design.
- include real, paper and synthetic flowers or make flowers from foam sheets (Clark Rubber), or from recycled materials from the Reviva dump shops.
- use floral fabric and brightly coloured fabric for costumes and backdrops to complement your floral content.



GRAND CENTRAL FLORAL PARADE

TIPS & TRICKS



Watch Past Parades!

DON'T

- let your ideas get stale!

DID YOU KNOW?...

You can watch YouTube & Vimeo videos of past parades?... (& other parades all 'round the world!)

DO...

- relive the fun & excitement and see your entry from the perspective of the audience.
- critique what worked and what you think could be improved on with your float/entry.
- challenge yourself - be inspired by other entries (look for visual impact, materials, techniques, colour schemes, costumes, animatronics).
- appreciate the beautiful work of other groups.
- JOIN our facebook group for more useful ideas and videos - "GRAND CENTRAL FLORAL PARADE PARTICIPANTS COMMUNITY".



GRAND CENTRAL FLORAL PARADE

TIPS & TRICKS

Float Tips

DON'T

- forget WHY we get involved in Carnival - We love our city and want to share our joy with visitors!

DO...

- ask for advice from Anna and Mary-Kate!
- make a maquette/scale model and plan your float.
- use a colour scheme and **PLENTY of FLOWERS.**
- choose an achievable float size & apply (if eligible) for a grant to buy flowers and materials.
- your float is **SAFE.**
- include a float skirt.
- build community with your group and with fellow parade participants by joining our Facebook group.
- ensure **EVERYONE IS IN COSTUME & HAVE FUN!**

